

硬體安裝指南

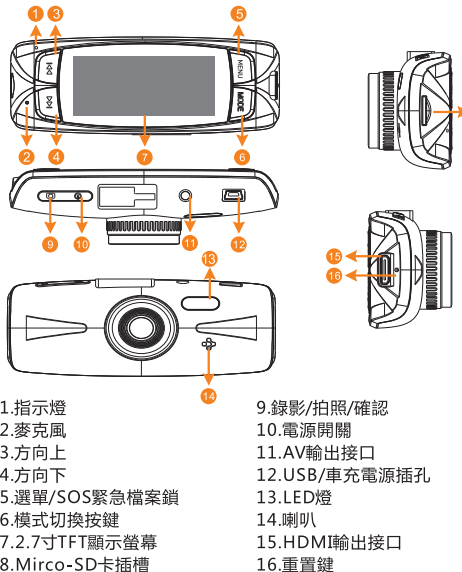
感謝您選購本公司產品，請詳閱此指南手冊，並特別注意相關提醒，正常操作主機！

本公司產品使用最好的電子原件，生產全球最好的優質畫面，提供給客戶最好的產品。

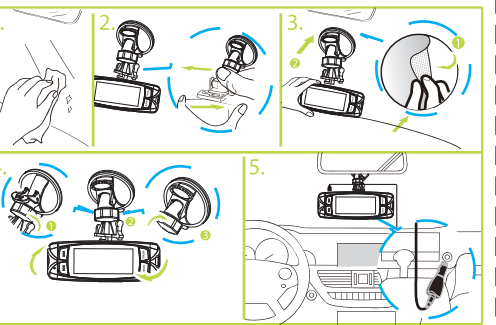
錄影中注意事項

- 1.在錄影中，汽車前方擋風玻璃無隔熱紙或貼膜，錄影效果則最佳。
- 2.車前擋風玻璃，內外請保持清潔，避免影像錄影畫面品質。
- 3.雨天錄影時，如發現雨刷刷不乾淨玻璃，請及時更換雨刷，避免造成雨天錄影品質不佳。
- 4.天晴錄影時，錄影畫面品質最佳，但注意如在逆光環境下錄影，畫面則較暗，此為正常現象。

產品結構



安裝與固定



- 1.請先將記憶卡依指定方向插入主機，並使用支架將主機固定於車內。
- 2.使用支架時，請慎選擺放位置。切勿將主機放在會阻礙開車視線或影響安全氣囊正常運作的位置。
- 3.如果汽車擋風玻璃內外有油漬、指紋或其它髒汙，請先擦拭乾淨後再安裝。

開啟與關閉主機電源

請插入車用電源並發動汽車，主機會立即開機。
當汽車熄火或者移除車用電源，主機10秒後自動關機。

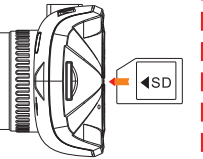
注意事項

- 1.當車輛熄火後點煙器仍供電的使用者，請在離開車子時務必將點煙器插頭拔起。
- 2.請使用8GB Class 6以上規格的Micro SD卡。

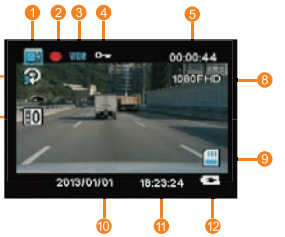
軟體操作指南

開機流程

- 1.插入記憶卡
- 2.將車用電源分別插入汽車點煙頭與主機
- 3.發動汽車
- 4.主機開機，系統將會自動開始錄影



錄影畫面



待機畫面



- | | |
|-------------|--------------|
| 1.錄影模式 | 8.錄影解析度 |
| 2.錄影圖示 | 9.記憶卡圖示 |
| 3.WDR功能全時開啟 | 10.日期顯示 |
| 4.SOS緊急檔案鎖 | 11.當前時間 |
| 5.錄影時間 | 12.連接電源充電 |
| 6.循環錄影3分鐘 | 13.SD卡剩餘錄影時間 |
| 7.曝光補償 | |

錄影設定

停止錄影後按一下MENU鍵進入錄影設定

解析度：設定錄影解析度大小。

循環錄影：設定錄影循環時間或關閉循環錄影功能。

WDR：全時開啟。

曝光值調整：設定曝光值大小。

位移偵測：開啟或關閉位移偵測錄影功能。

錄音：開啟或關閉錄音功能。

日期記錄：開啟或關閉日期記錄功能。

重力感應：設定G-Sensor觸發檔案保護的靈敏度。

系統設置

停止錄影後按二下MENU鍵進入系統設定

日期/時間：更改系統時間。

螢幕保護：設定螢幕自動關閉時間，或永遠開啟。

LED燈：開啟或關閉LED燈功能。

提示音：開啟或關閉系統提示音。

語言：支援多國語言，可依您的喜好調整。

電視輸出：影像輸出時，可調整NTSC與PAL。

頻率：支援50Hz與60Hz。

格式化：將記憶卡進行格式化，格式化前請先備份資料。

預設值：將所有設定回復至原廠預設狀態。

版本：查看系統版本號。

回放模式

播放流程

- 1.停止錄影後按二下MODE鍵進入影片播放模式。
- 2.按上下鍵選擇到想要播放的影片。
- 3.按下確認鍵開始播放影片。
- 4.再一次按下確認鍵暫停播放影片。

影片刪除

- 1.停止錄影後按二下MODE鍵進入影片播放模式。
- 2.按上下鍵選擇到想要刪除的影片。
- 3.按下MENU鍵進入選單進行影片刪除或全部刪除。

電腦播放

建議使用免費的VLC PLAYER播放記憶卡中的影像
請連線到<http://www.videolan.org/vlc/> 下載VLC PLAYER並安裝即可
播放1080P 30fps影像電腦規格建議：
1.intel Core 2 Duo 2.0GHz 以上CPU
2.2G以上DDRII記憶體
3.支援DirectX 10以上規格之顯示卡

Hardware Installation Guide

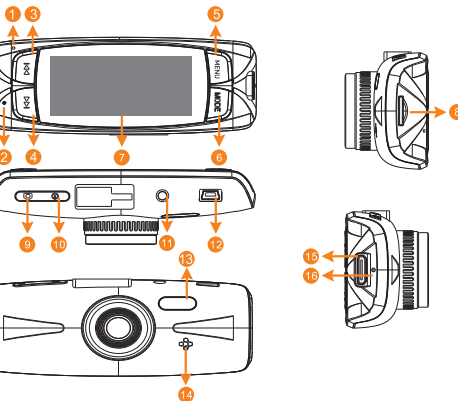
Thank you for purchasing Our company product, please following the instruction to use the device correctly.

Our company products are made of top materials to provide the best quality product with the best image quality to all customers.

Recording notes

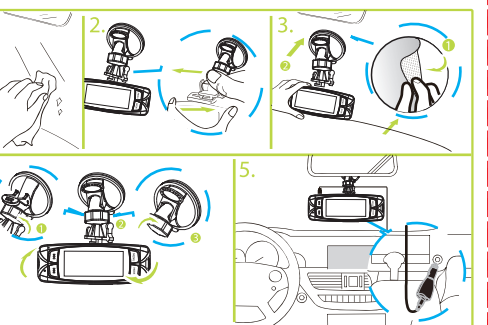
1. Recording in a car without film on windshield can ensure the best image recorded.
2. Please keep the windshield clean to prevent bad influence on image quality.
3. If windshield wiper can't clean the windshield, please replace it with a new one, or the image quality in the rainy day will be influenced.
4. Image quality will be better while recording in a sunny day, but please note in backlight position the image will be darker, it's the normal reaction while image sensor face the light straightly.

Product Structure



- | | |
|---------------------------------|----------------------------------|
| 1. Indicator | 9.Video Recording/Camera/Confirm |
| 2. Microphone | 10.Power switch |
| 3. UP | 11.AV Output Port |
| 4. DOWN | 12.USB/Vehicle Charger Power |
| 5. MENU/SOS Emergency File Lock | Supply Jack |
| 6. MODE Switch | 13.LED lamp |
| 7. 2.7-Inch TFT Display Screen | 14.Speaker |
| 8. Micro-SD Card Slot | 15.HDMI Output Jack |
| | 16.Reset key |

Installation and Fixation



- 1.Please insert the memory card into the SD Card Slot with the specified direction, and then use the bracket to install the device inside the car.
- 2.When using the bracket, please choose the position carefully. Do not place the device in the position that blocks the driver's sight or affects the work of the airbags.
- 3.If there is any splotch, fingerprints or other kinds of smudginess on the windshield, please wipe clean it before installing.

Power On/Off

Please connect the vehicle cigarette lighter and start the engine, the device will be switched on immediately. When car engine stoped or car power disconnected, the device will shutdown in 10 seconds automatically.

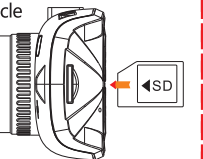
Notes

- 1.For the users whose vehicle cigarette lighter keeps power supplying after the engine stopped, please unplug the car charger before leaving the vehicle.
- 2.Please use Class 6 or above Micro SD card

Software Operation

Switch On

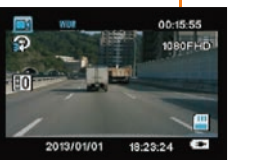
- 1.Insert the memory card
- 2.Connect the car charger into the vehicle cigarette lighter and the device
- 3.Start the vehicle.
- 4.The device be turned on, and start recording automatically.



Recording image



Standby Image



- | | |
|---------------------------------------|--|
| 1.Recording mode | 8.Resolution |
| 2.Recording image | 9.Memory Card icon |
| 3.WDR works all time | 10.Date |
| 4.SOS file locking | 11.Time |
| 5.Recording time | 12.Power connected |
| 6.Cycle recording in 3 minutes length | 13.Available recording length of SD card |
| 7.Exposure compensation | |

Recording Settings

After stopped recording, press MENU to enter the recording settings.

Resolution : Set the recording resolution.

Record Cycle : Set the video length in recording cycle mode, or toggle off record cycle function.

WDR : Toggle on the WDR function.

EV : Set the exposure value.

Motion Detection : Toggle on or off the motion detection recording function.

Sound Recording : Toggle on or off the sound recording function.

Date Stamp : Toggle on or off the data stamp function.

G-sensor : Set the sensitivity level of the G-sensor file protection .

System Settings

After stopped recording, press MENU twice to enter the system setup.

Date/Time : Set the system time.

LCD screen protection : Set the screen automatic off time, or set it as always on.

LED light: Switch on or off LED light function.

Beep : Switch on or off the system beep indicator.

Language : Support multiple languages; you can choose the language according to your preferences.

TV Mode : You can toggle between NTSC and PAL when in video output mode.

Frequency : Support 50Hz and 60Hz.

Format : Format the memory card; please backup your data before formatting.

Default Setting : Reset all the settings to the default state.

Version : Check the system version number.

Video Playback

Video-Play Operation

- 1.After stopped recording, press MODE to enter the video-play mode.
- 2.Press UP or Down to select the desired video to play.
- 3.Press CONFIRM to start playing video.
4. Press CONFIRM again to pause the video.

Delete Video

- 1.After stopped recording, press MODE to enter the video-play mode.
- 2.Press UP or Down to select the desired video to delete.
- 3.Press MENU, enter the menu to delete the video or delete all.

Play on Computer

It is recommended to play the video by free software VLC PLAYER. Please go to <http://www.videolan.org/vlc/> to download and install VLC Player.

Recommended PC requirements for 1080P 30fps video playing:

- 1.intel Core 2 Duo 2.0GHz or above CPU
- 2.2G or above DDRII RAM
- 3.Graphic card supports DirectX 10 or above